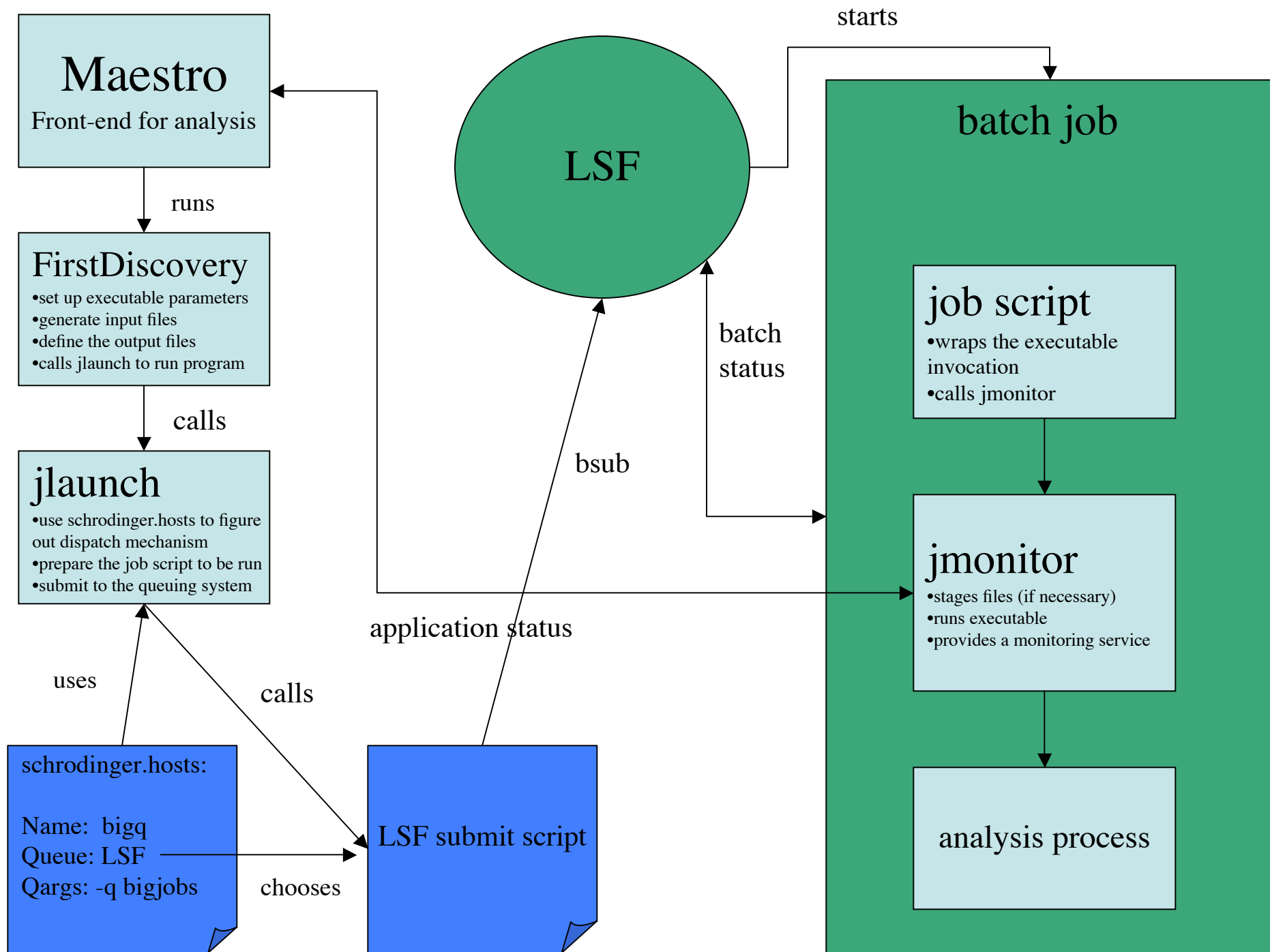


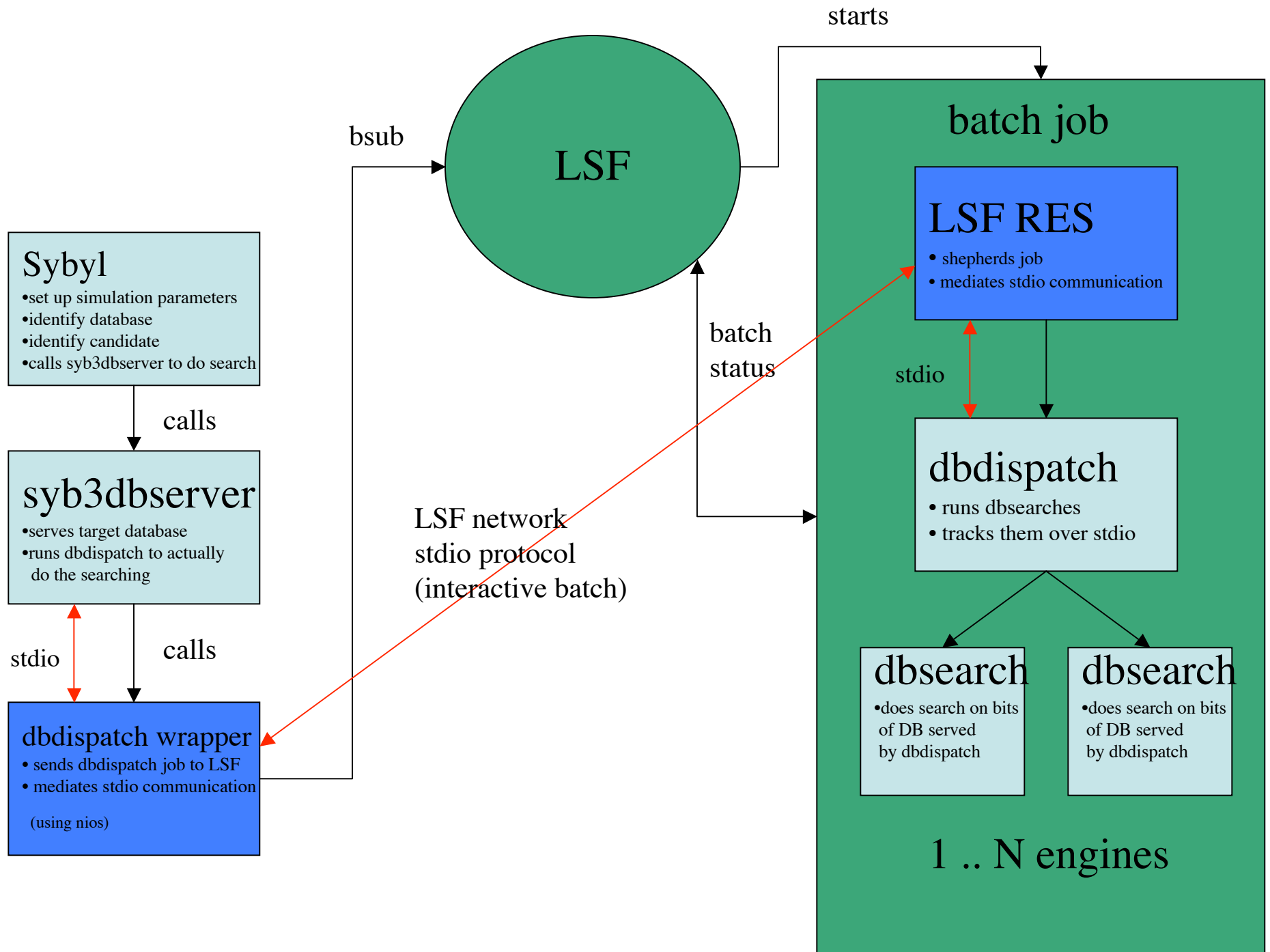
Grid Application Integration

Chris Smith
Platform Computing
GGF17 - Tokyo

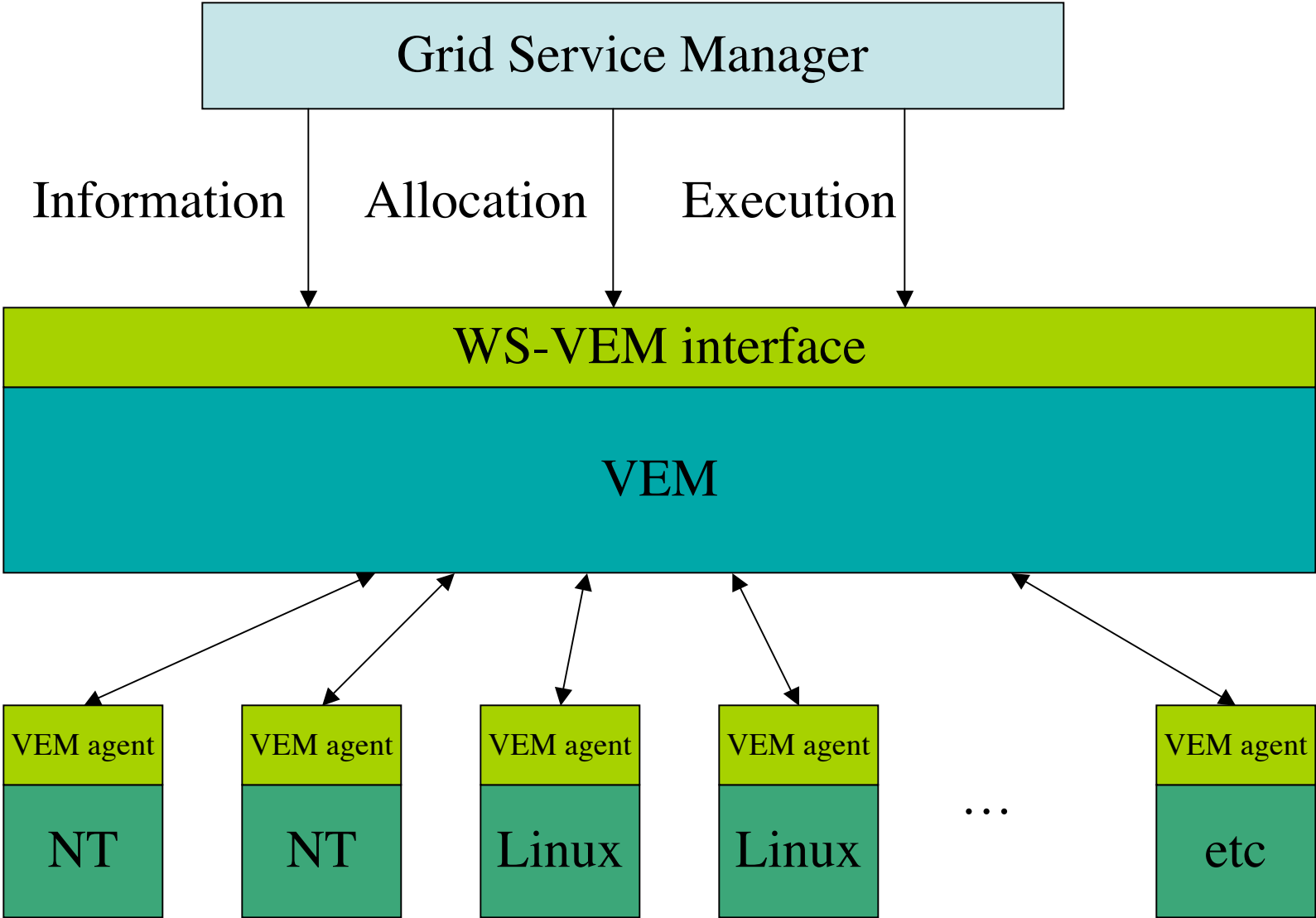
Overview

- Application integration in pictures
 - Maestro, Sybyl, VEM adapter
- The overlap with SAGA
 - Could these integrations be done with SAGA today?
- Some possible future SAGA direction
 - Task-oriented applications

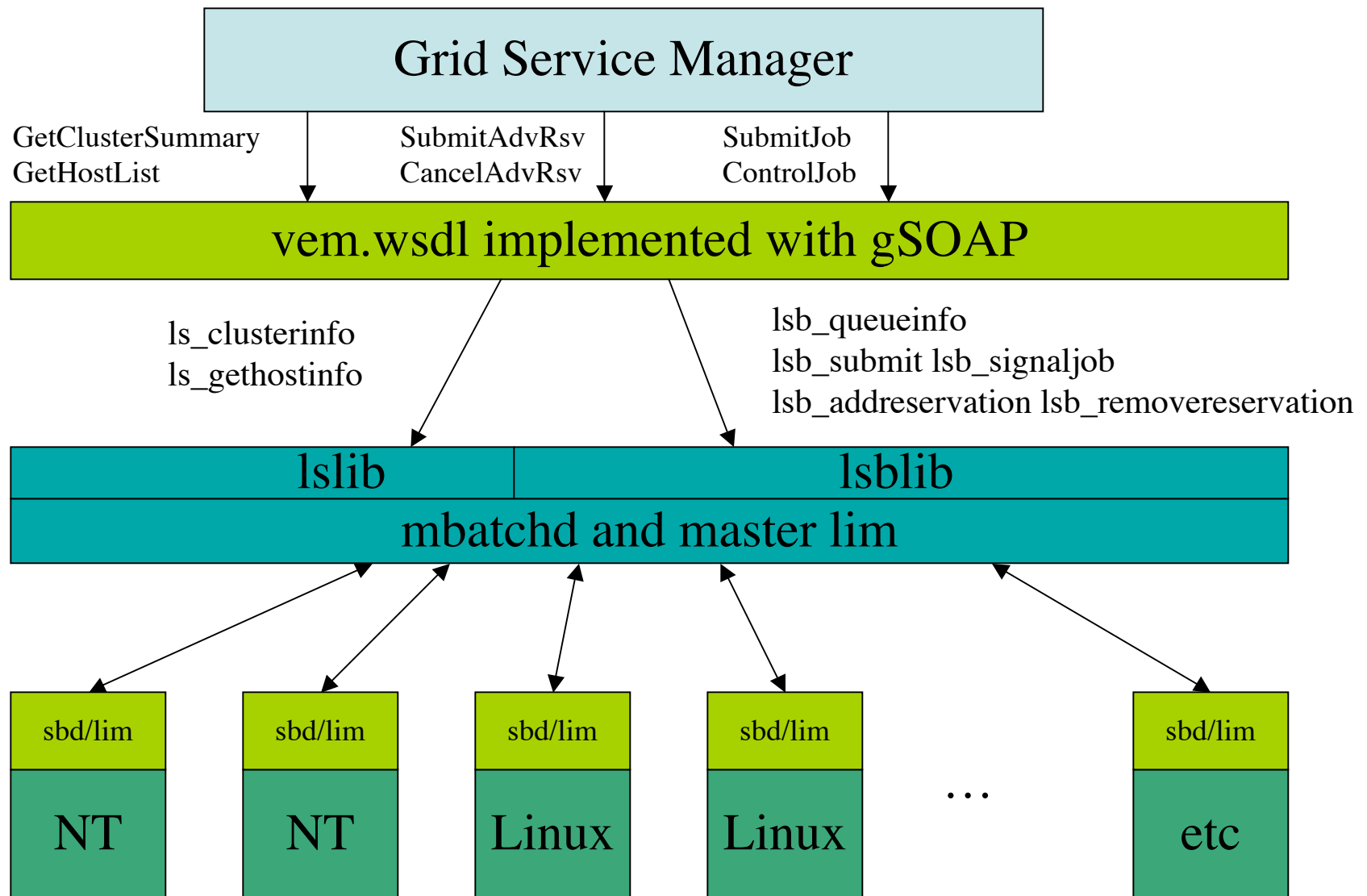




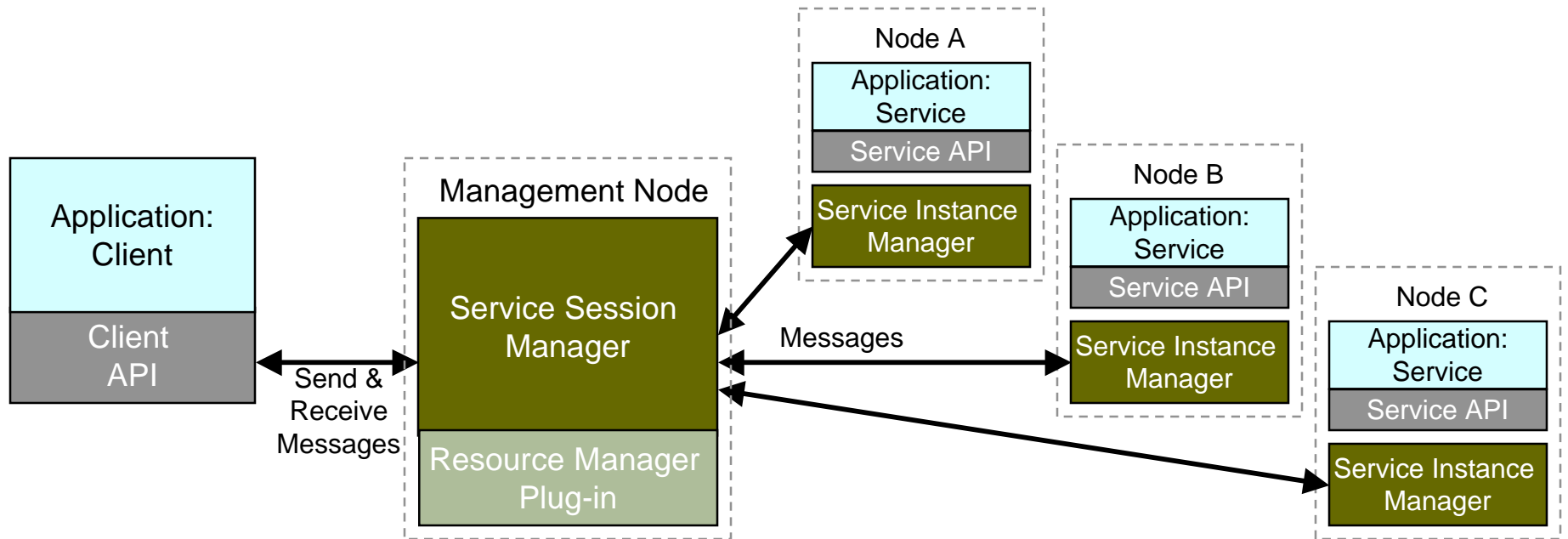
GSM and the VEM architecture: The Vision



GSM and the VEM architecture: The Implementation



Task-oriented Application Architecture



Generalized API

Client API classes (+5 APIs):

- ConnectionFactory
- Connection = ConnectionFactory.connect()
- Session = Connection.createSession()
 - Session.getEligibleNumCPU()
 - Session.startService()
 - Session.stopService()
 - Session.sendTaskInput() // Task API
 - SessionCallback
 - onServiceStart()
 - onServiceFinish()
 - onTaskOutput() // Task API
 - onException()
- ClientException

Service API classes (same):

- Pre/post execs called by SIM
- ServiceContainer
 - onCreateService() // Service pre-exec
 - onDestroyService() // Service post-exec
 - onSessionEnter() // Session pre-exec
 - onSessionLeave() // Session post-exec
 - onInvoke() // Task API
- SessionContext
- ServiceException

Questions?